

## Viridans Just-a-Minute : Tutorial 2

### Task:

**The Baluk Willam Nature Conservation Reserve is well-known for its orchids. Use Just-a-Minute – Victorian Plants to create a list of all orchid species found in the reserve.**

- Find the location of the Baluk Willam reserve
- Sketch a search area around the reserve (with a generous buffer)
- Summarise a list of all plant species found in the search area.
- Refine the list to include only orchids
- Save the list of species in a Rich Text document.

### **The products of this task should be:**

- A Rich Text document with all orchid species recorded from the search area showing the common name, scientific name, conservation status, family and most recent record for each.

Just a Minute (Standard)  
Just a Minute (1:1,000,000 to 1:100,000)  
Just a Minute (1:1,000,000 to 1:100,000 - Low Contrast)  
Help  
Close

Select this option

*Just-a-Minute*  
*Victorian Plants*  
2012

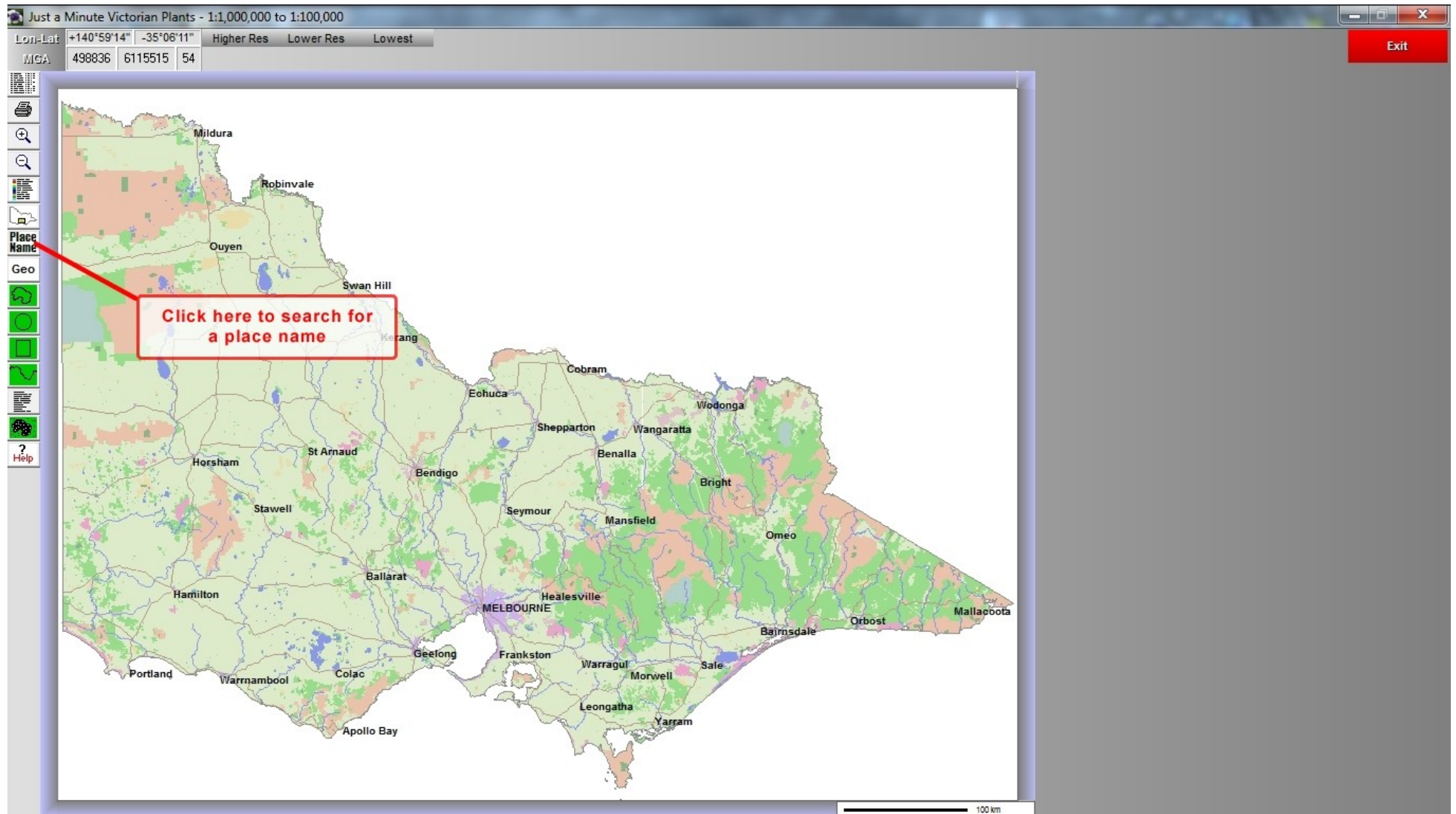


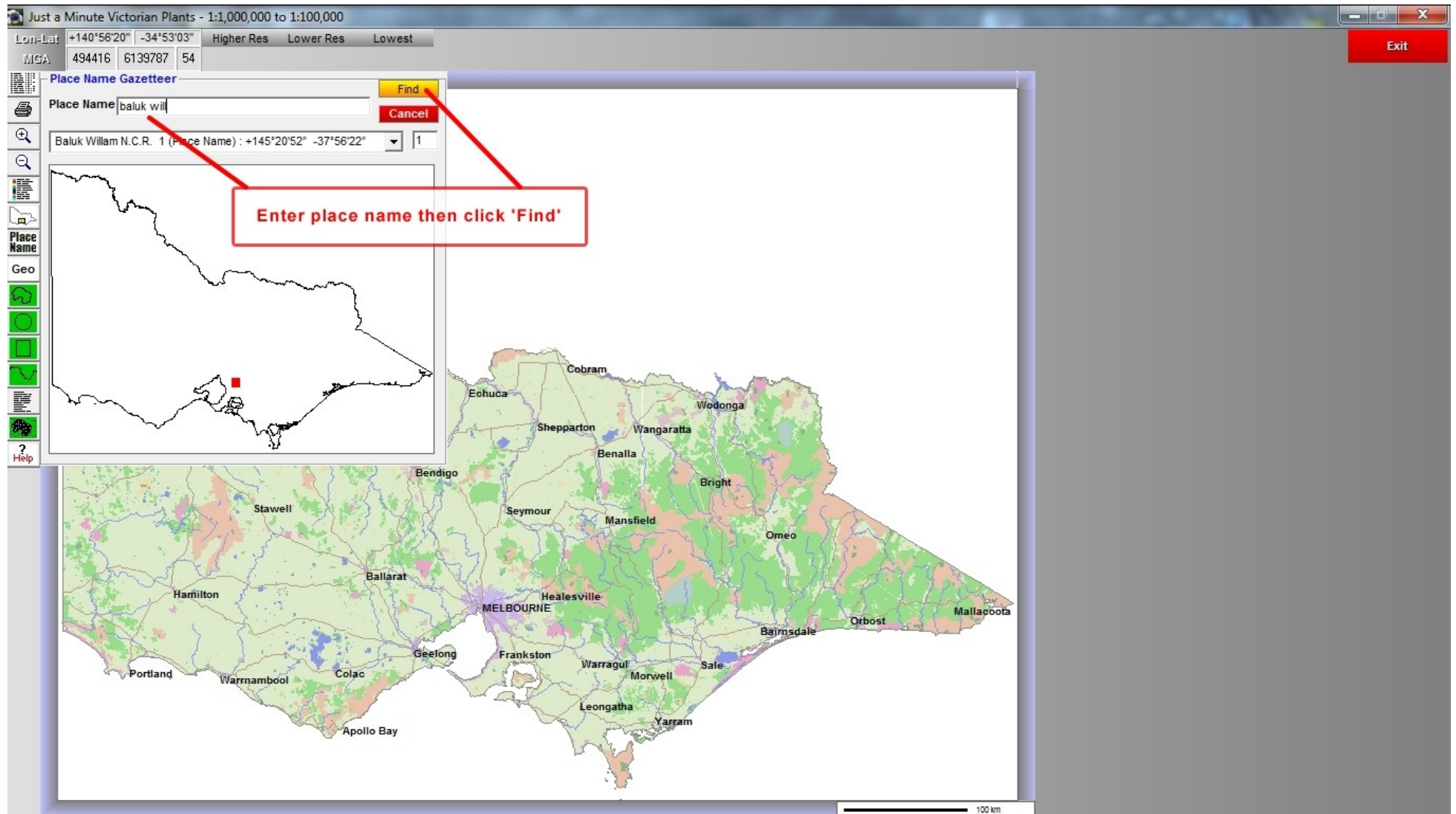
- Full Species List
- Area Species List
- Search an Area
- Help
- Close

Select this option

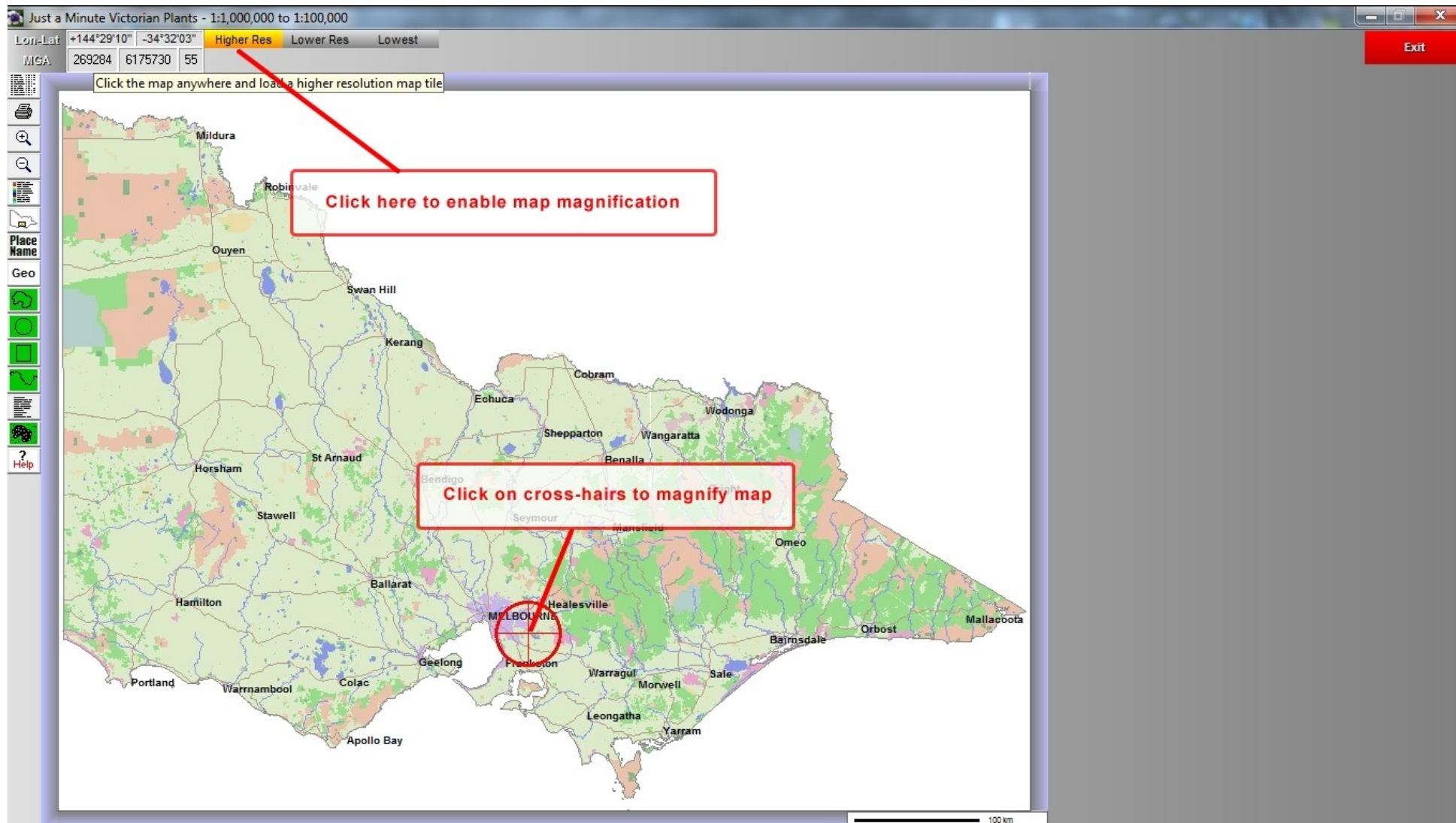
*Just-a-Minute*  
*Victorian Plants*  
2012

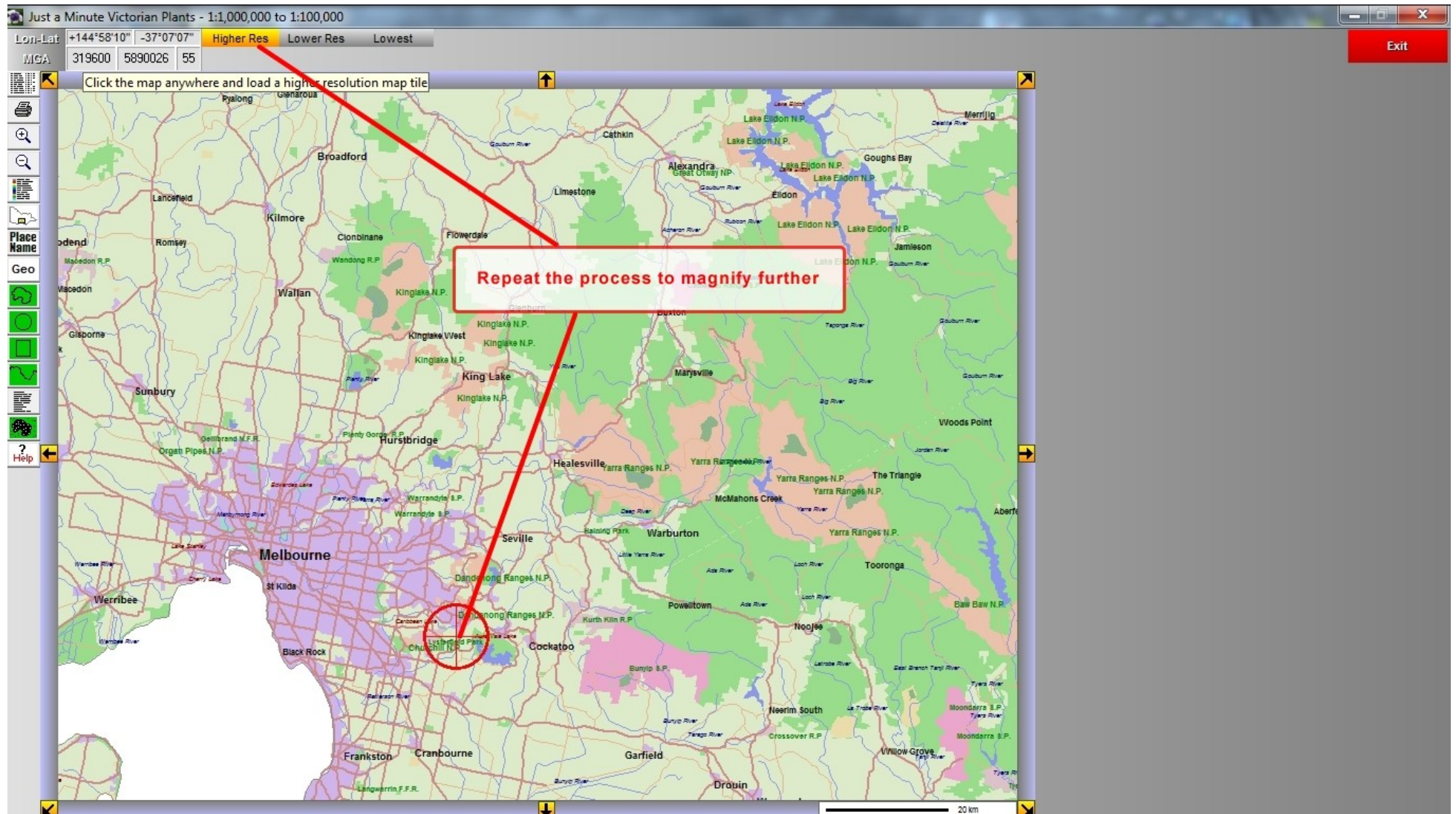




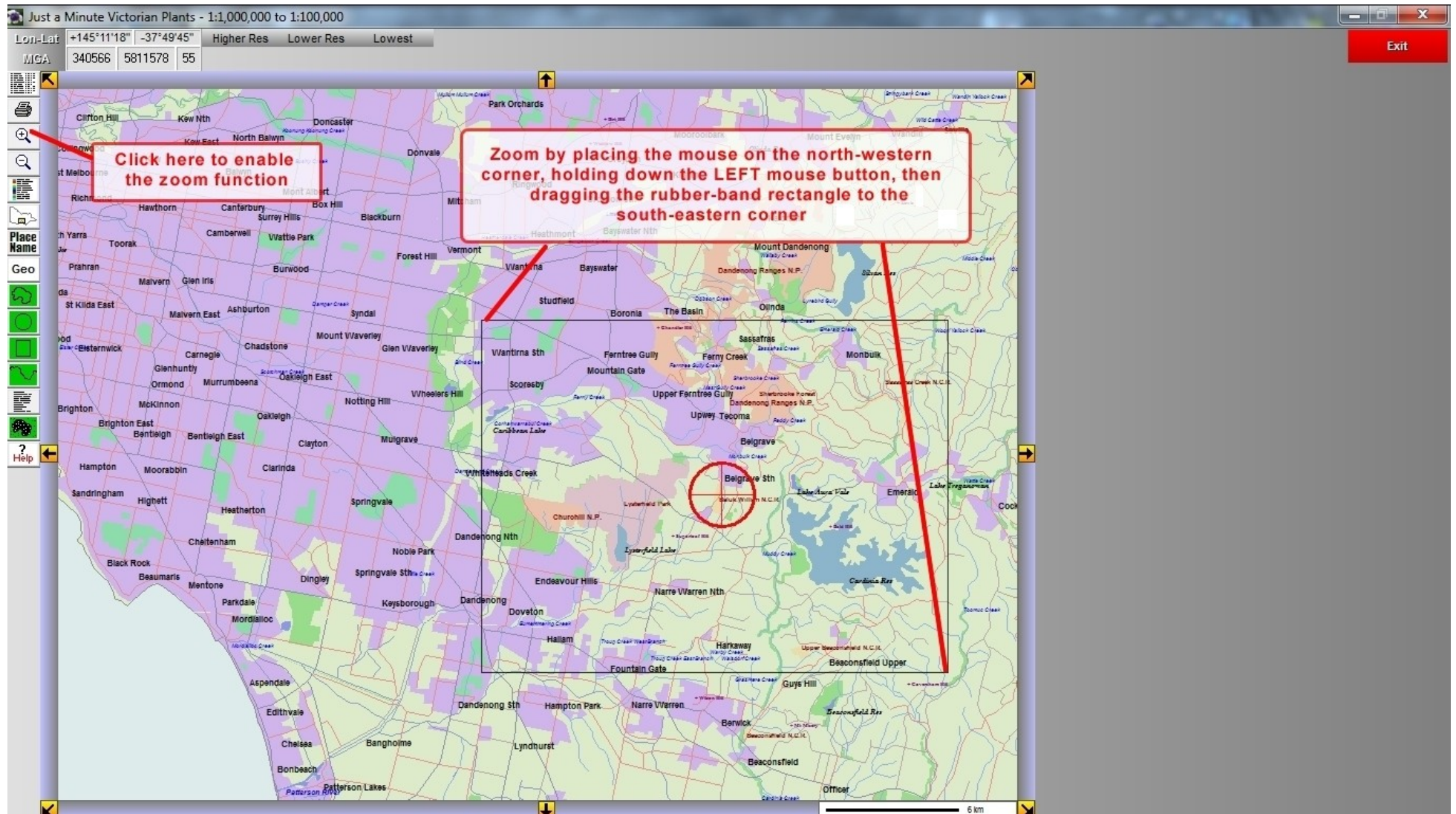




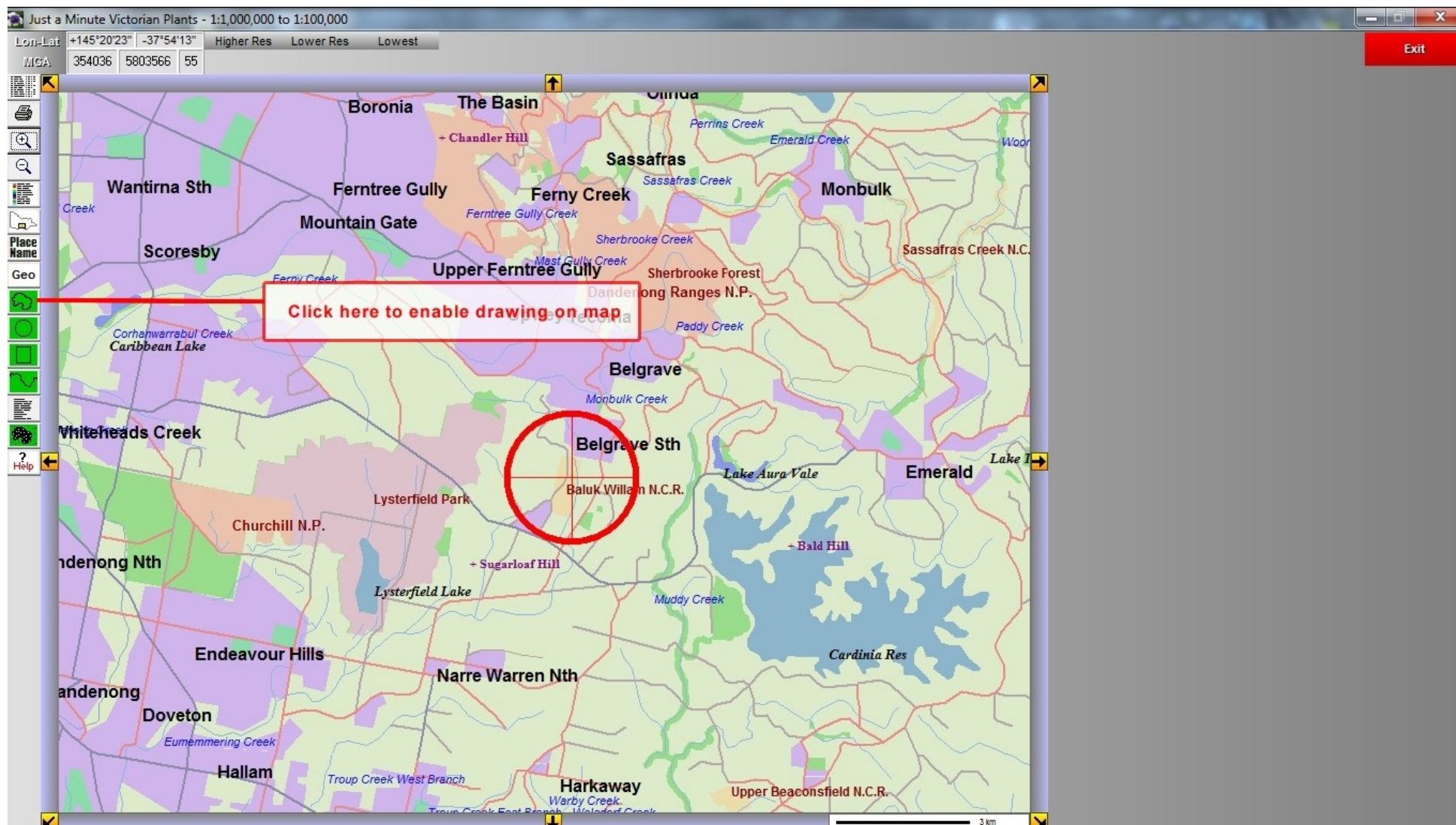


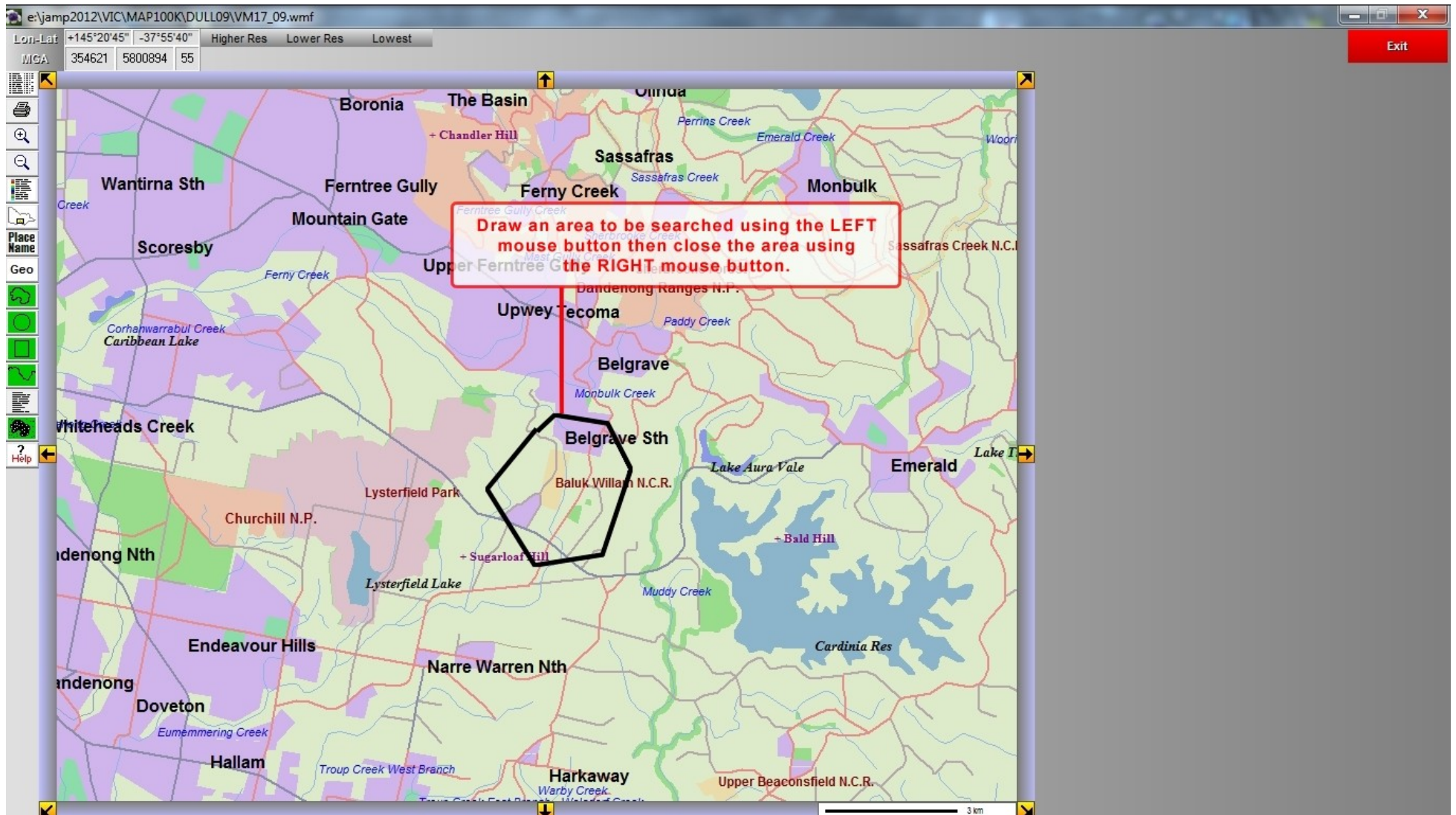




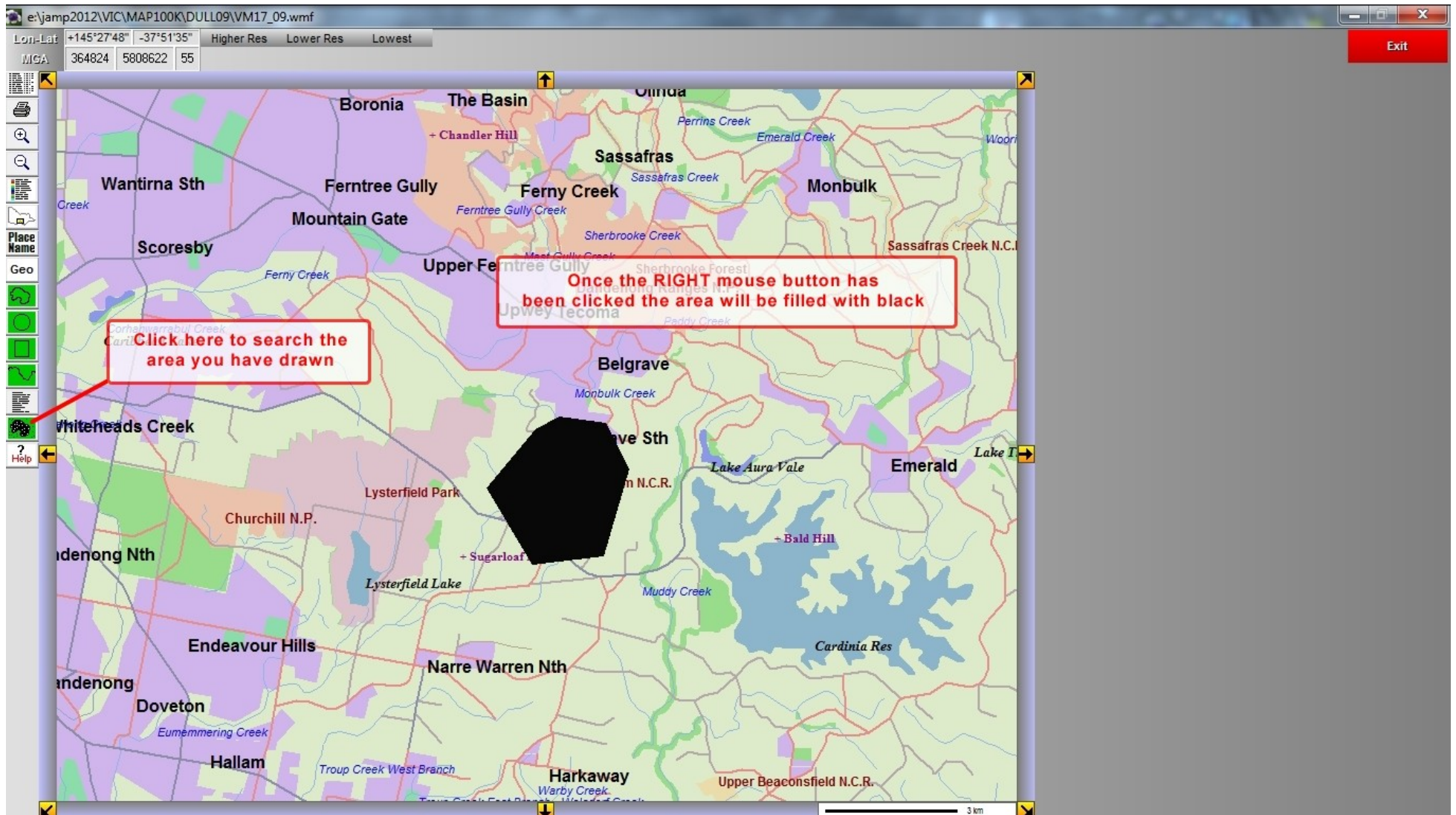




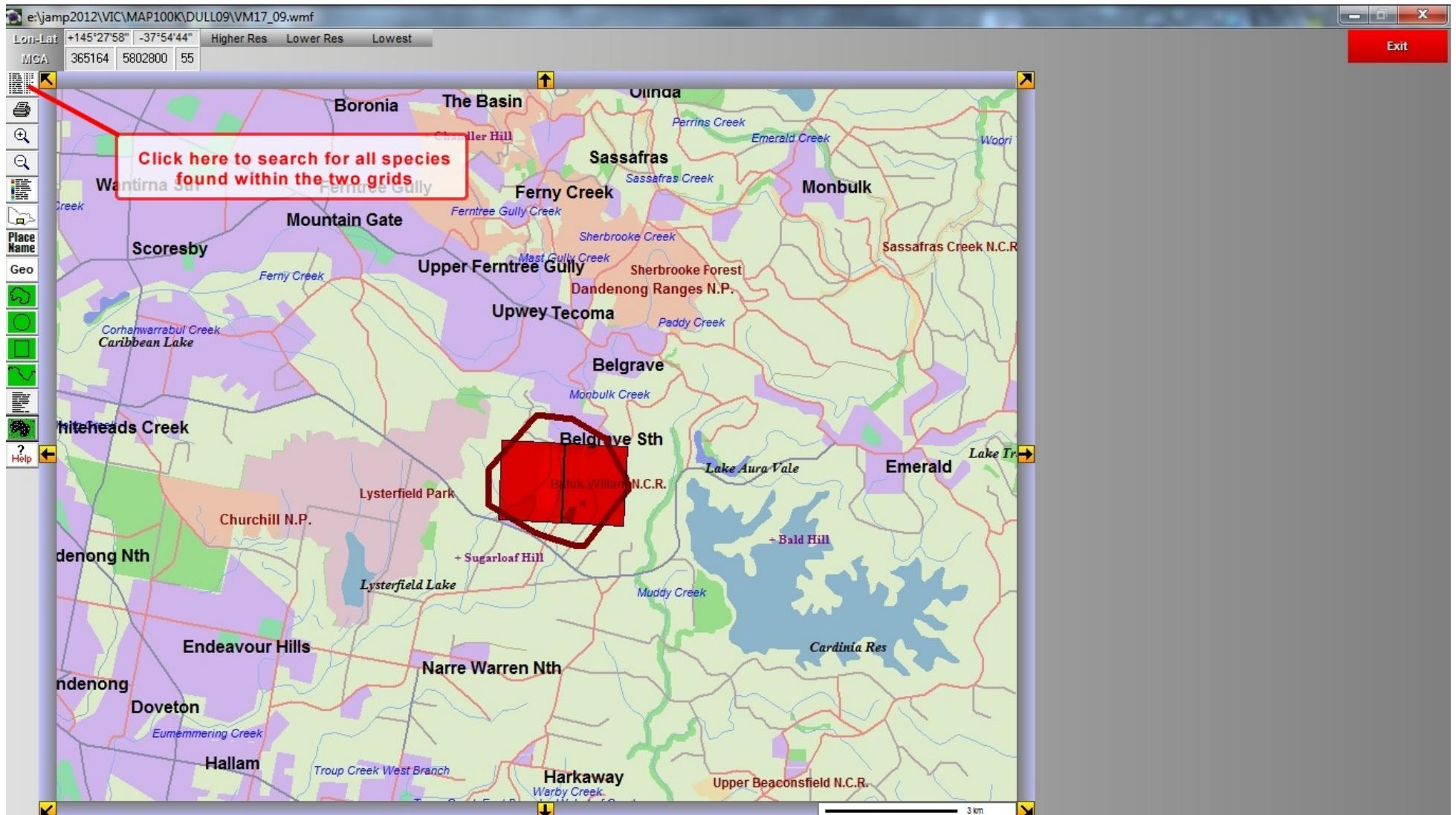












Just a Minute Victorian Plants - 1:1,000,000 to 1:100,000

Enter Scientific Name

Find Name

Sort on Common Name

Scientific Name Order : Area List : 363 species

Click on column buttons for interpretation of this list

F	A	S	O	Scientific Name	Common Name	Family Name	Last Date
		*		Acacia baileyana	Cootamundra Wattle	Mimosaceae	1970-1979
				Acacia brownii	Heath Wattle	Mimosaceae	2000-2010
				Acacia dealbata	Silver Wattle	Mimosaceae	1980-1989
				Acacia genistifolia	Spreading Wattle	Mimosaceae	1980-1989
		#		Acacia longifolia	Sallow Wattle	Mimosaceae	1990-1999
		#		Acacia longifolia subsp. longifolia	Sallow Wattle	Mimosaceae	2000-2010
				Acacia mearnsii	Black Wattle	Mimosaceae	2000-2010
				Acacia melanoxylon	Blackwood	Mimosaceae	2000-2010
				Acacia myrtifolia	Myrtle Wattle	Mimosaceae	1990-1999
		*		Acacia schinoides	Frosty Wattle	Mimosaceae	2000-2010
	r			Acacia stictophylla	Dandenong Wattle	Mimosaceae	2000-2010
				Acacia stricta	Hop Wattle	Mimosaceae	2000-2010
				Acacia ulicifolia	Juniper Wattle	Mimosaceae	1970-1979
				Acacia verniciflua	Varnish Wattle	Mimosaceae	2000-2010
				Acacia verticillata	Prickly Moses	Mimosaceae	2000-2010
				Acacia verticillata subsp. verticillata	Prickly Moses	Mimosaceae	1990-1999
				Acaena echinata	Sheep's Burr	Rosaceae	1980-1989
				Acaena novae-zelandiae	Bidgee-widgee	Rosaceae	2000-2010
		*		Acetosella vulgaris	Sheep Sorrel	Polygonaceae	1980-1989
				Acicathus caudatus	Mouflé Orchid	Orchidaceae	2000-2010

Set Filters - Full

Apply Filters

Set Filters - Quick

Show Current Filters

Print or Export List in Alphabetic Order

Print or Export List in Systematic Order

Plot Distribution Map

Print Picture Text and Map

Display Larger Picture

General Appearance:

A large shrub or small tree to 5 m tall, with pale blue-green, feathery foliage, and very bright yellow, globular, flower clusters, in racemes, arising from leaf axils.

Leaves:

Bipinnate, alternate, broad oblong, 2-5 x 2-4 cm. Pinnae oblong, 2-3 x 1 cm, usually in 4 opposite pairs, the lowest deflexed and partially embracing the stem, the upper pairs with a gland at their bases. Pinnules, in 8-16 opposite pairs, oblong, 4-7 x 1 mm.

Flowers:

Clustered in globular, bright, golden-yellow heads, to 1 cm across, in long slender, often leafy racemes, to 10 cm long, at the ends of branchlets. Sepals and petals 3, inconspicuous. (Jun Jul Aug Sep)

Fruit:

An oblong, flattened pod to 9 x 1 cm, sometimes with one or two deep constrictions between seeds. Seeds 4-10, black and shiny, ovoid, 6-8 mm long, funicle pale brown, narrow and shorter than seed.

Notes:




Records outside of the Cootamundra region (perhaps more than 100 km from the town) in southern NSW are probably naturalisations.

Conservation:

[\*] Introduced to Victoria since European settlement.

Other States:

NSW/OLD SA/WA/TAS/ACT

Photographer: Paul Gullan/Viridans Images

Image 1 of 1

Click here to access the standard filter options

Highlight any technical word then right-click mouse to find its meaning



Just a Minute Victorian Plants - 1:1,000,000 to 1:100,000

Enter Scientific Name

Find Name

Sort on Common Name

Scientific Name Order : Area List : 353 species

Click on column buttons for interpretation of this list

F	A	S	O	Scientific Name	Common Name	Family Name	Last Date
		*		Acacia baileyana	Cootamundra Wattle	Mimosaceae	1970-1979
				Acacia brownii	Heath Wattle	Mimosaceae	2000-2010
				Acacia dealbata	Silver Wattle	Mimosaceae	1980-1989
				Acacia genistifolia	Spreading Wattle	Mimosaceae	
		#		Acacia longifolia	Sallow Wattle	Mimosaceae	
		#		Acacia longifolia subsp. longifolia	Sallow Wattle	Mimosaceae	
				Acacia mearnsii	Black Wattle	Mimosaceae	
				Acacia melanoxylon	Blackwood	Mimosaceae	
				Acacia myrtifolia	Myrtle Wattle	Mimosaceae	1990-1999
		*		Acacia schinoides	Frosty Wattle	Mimosaceae	2000-2010
	r			Acacia stictophylla	Dandenong Wattle	Mimosaceae	2000-2010
				Acacia stricta	Hop Wattle	Mimosaceae	2000-2010
				Acacia ulicifolia	Juniper Wattle	Mimosaceae	1970-1979
				Acacia verniciflua	Varnish Wattle	Mimosaceae	2000-2010
				Acacia verticillata	Prickly Moses	Mimosaceae	2000-2010
				Acacia verticillata subsp. verticillata	Prickly Moses	Mimosaceae	1990-1999
				Acaena echinata	Sheep's Burr	Rosaceae	1980-1989
				Acaena novae-zelandiae	Bidgee-widgee	Rosaceae	2000-2010
		*		Acetosella vulgaris	Sheep Sorrel	Polygonaceae	1980-1989
				Acrothos pseudatus	Mouflon Orchid	Orchidaceae	2000-2010

Quick Filters

☐ Mistletoes
 ☒ Orchids
 ☐ Grasses
 ☐ Rare or Threatened Species
 ☐ Introduced Plants

Select the Orchids option

**General Appearance:** A large shrub or small tree to 5 m tall, with pale blue-green, feathery foliage, and very bright yellow, globular, flower clusters, in racemes, arising from leaf axils.

**Leaves:** Bipinnate, alternate, broad oblong, 2-5 x 2-4 cm. Pinnae oblong, 2-3 x 1 cm, usually in 4 opposite pairs, the lowest deflexed and partially embracing the stem, the upper pairs with a gland at their bases. Pinnules, in 8-16 opposite pairs, oblong, 4-7 x 1 mm.



**Flowers:** Clustered in globular, bright, golden-yellow heads, to 1 cm across, in long slender, often leafy racemes, to 10 cm long, at the ends of branchlets. Sepals and petals 3, inconspicuous. (Jun Jul Aug Sep)

**Fruit:** An oblong, flattened pod to 9 x 1 cm, sometimes with one or two deep constrictions between seeds. Seeds 4-10, black and shiny, ovoid, 6-8 mm long, funicle pale brown, narrow and shorter than seed.

**Notes:** Records outside of the Cootamundra region (perhaps more than 100 km from the town) in southern NSW are probably naturalisations.

**Conservation:** [\*] Introduced to Victoria since European settlement.

**Other States:** NSW/OLD SA/WA/TAS/ACT

Photographer: Paul Gullan/Viridans Images

Image 1 of 1

Exit

Help

Set Filters - Full

Apply Filters

Set Filters - Quick

Show Current Filters

Print or Export List in Alphabetic Order

Print or Export List in Systematic Order

Plot Distribution Map

Print Picture Text and Map

Display Larger Picture

Highlight any technical word then right-click mouse to find its meaning



Just a Minute Victorian Plants - 1:1,000,000 to 1:100,000

Enter Scientific Name

Find Name

Sort on Common Name

Scientific Name Order : Area List : Filtered : 73 species

Click on column buttons for interpretation of this list

F	A	S	O	Scientific Name	Common Name	Family Name	Last Date
				Acianthus caudatus	Mayfly Orchid	Orchidaceae	2000-2010
				Acianthus pusillus	Small Mosquito-orchid	Orchidaceae	1990-1949
				Caladenia carnea	Pink Fingers	Orchidaceae	2000-2010
				Caladenia catenata	White Fingers	Orchidaceae	2000-2010
				Caladenia clavigera	Plain-lip Spider-orchid	Orchidaceae	2000-2010
				Caladenia congesta	Black-tongue Hood-orchid	Orchidaceae	2000-2010
				Caladenia moschata	Musk Hood-orchid	Orchidaceae	1980-1989
	v			Caladenia oenochila	Wine-lipped Spider-orchid	Orchidaceae	2000-2010
				Caladenia parva	Small Spider-orchid	Orchidaceae	1990-1999
				Caladenia phaeoclavia	Brown-clubbed Spider-orchid	Orchidaceae	2000-2010
				Caladenia praecox	Early Hood-orchid	Orchidaceae	1980-1989
				Caladenia pusilla	Tiny Pink-fingers	Orchidaceae	1980-1989
				Caladenia tentaculata	Mantis Orchid	Orchidaceae	2000-2010
				Caladenia transitoria	Eastern Bronzewood Orchid	Orchidaceae	2000-2010
				Calochilus campestris	Copper Beard-orchid	Orchidaceae	2000-2010
				Calochilus paludosus	Red Beard-orchid	Orchidaceae	2000-2010
				Calochilus robertsonii	Purple Beard-orchid	Orchidaceae	2000-2010
				Corunastylis archeri	Elfin Midge-orchid	Orchidaceae	1980-1989
				Corunastylis despectans	Sharp Midge-orchid	Orchidaceae	2000-2010
				Corunastylis merrii	Bearded Midge-orchid	Orchidaceae	1980-1989

Click here to access print and export options

Exit

Help

Set Filters - Full

Undo Filters

Set Filters - Quick

Show Current Filters

Print or Export List in Alphabetic Order

Print or Export List in Systematic Order

Plot Distribution Map

Print Picture Text and Map

Display Larger Picture

Image 1 of 2

**General Appearance:** An orchid, to 50 cm tall, with a single, erect, narrow leaf at the base of a sparsely hairy stem bearing 1-4 pink, fan-shaped flowers.

**Leaves:** Linear, to 20 cm x 5 mm, hairy.

**Flowers:** Pink, to 30 mm wide. Sepals and petals similar, obovate, to 20 mm long; upper sepal arched forwards and hood-like; petals and lower sepals spreading forwards and downwards in a fan-like arrangement. Labellum, broadly ovate, pink, erect, three-lobed; central lobe, tapered, curled forwards and downwards, almost completely covered with a mass of dark purple lumps; side lobes curled upwards around the arched column. (Jan Oct Nov Dec)

**Aboriginal Use:** The starchy tubers were eaten.

**Other States:** NSW SA TAS ACT

**Annual Rainfall:** 764 to 1190 mm

**Warmest Temperatures:** 23 to 27 °C

**Coollest Temperatures:** 1 to 5 °C

**Altitude:** 22 to 672 m ASL

Photographer: Paul Gullan/Viridans Images

Highlight any technical word then right-click mouse to find its meaning

Exit

[Click here to create a Rich Text document](#)

[illegible]

**Change Heading**

Accept

Cancel

Orchids of Baluk Willam

Viridans Alphabetic Species List Print

File Saved: e:\jamp2012\usersave\orchids of balu willam.rtf

Rich Text Preview

Print  
Printer Setup  
Change Heading  
Save as CSV  
Save as Rich Text  
Rich Text Options  
Help  
Exit

Click here to close the preview

Close

Orchids of Baluk Willam

Species Names

Species Names	Family	Last Date
<i>Acianthus caudatus</i> - Mayfly Orchid	Orchidaceae	2000-2010
<i>Acianthus pusillus</i> - Small Mosquito-orchid	Orchidaceae	1900-1949
<i>Caladenia carnea</i> - Pink Fingers	Orchidaceae	2000-2010
<i>Caladenia catenata</i> - White Fingers	Orchidaceae	2000-2010
<i>Caladenia clavigera</i> - Plain-lip Spider-orchid	Orchidaceae	2000-2010
<i>Caladenia congesta</i> - Black-tongue Hood-orchid	Orchidaceae	2000-2010
<i>Caladenia moschata</i> - Musk Hood-orchid	Orchidaceae	1980-1989
<i>Caladenia oenochila</i> - Wine-lipped Spider-orchid	Orchidaceae	2000-2010
<i>Caladenia parya</i> - Small Spider-orchid	Orchidaceae	1990-1999
<i>Caladenia phaeoclavata</i> - Brown-clubbed Spider-orchid	Orchidaceae	2000-2010
<i>Caladenia pusilla</i> - Tiny Pink-fingers	Orchidaceae	1980-1989
<i>Caladenia tentaculata</i> - Mantis Orchid	Orchidaceae	2000-2010
<i>Caladenia transitoria</i> - Eastern Bronzehood Orchid	Orchidaceae	2000-2010
<i>Calochilus campestris</i> - Copper Beard-orchid	Orchidaceae	2000-2010
<i>Calochilus paludosus</i> - Red Beard-orchid	Orchidaceae	2000-2010
<i>Calochilus robertsonii</i> - Purple Beard-orchid	Orchidaceae	2000-2010
<i>Corunastylis archeri</i> - Elfín Midge-orchid	Orchidaceae	1980-1989
<i>Corunastylis despectans</i> - Sharp Midge-orchid	Orchidaceae	2000-2010
<i>Corunastylis morrisii</i> - Bearded Midge-orchid	Orchidaceae	1980-1989
<i>Corybas aconitiflorus</i> - Spurred Helmet-orchid	Orchidaceae	2000-2010
<i>Corybas incurvus</i> - Slaty Helmet-orchid	Orchidaceae	1980-1989
<i>Corybas unguiculatus</i> - Small Pelican-orchid	Orchidaceae	2000-2010
<i>Cryptostylis leptochila</i> - Small Tongue-orchid	Orchidaceae	2000-2010
<i>Cryptostylis subulata</i> - Large Tongue-orchid	Orchidaceae	2000-2010
<i>Cyanicula caerulea</i> - Blue Fairy	Orchidaceae	1980-1989
<i>Cyrtostylis reniformis</i> - Small Gnat-orchid	Orchidaceae	1980-1989
<i>Dipodium punctatum s.l.</i> - Hyacinth Orchid	Orchidaceae	1980-1989
<i>Dipodium roseum</i> - Rosy Hyacinth-orchid	Orchidaceae	Undated
<i>Diuris orientis</i> - Wallflower Orchid	Orchidaceae	2000-2010
<i>Diuris pardina</i> - Leopard Orchid	Orchidaceae	2000-2010
<i>Eriochilus cucullatus</i> - Parson's Bands	Orchidaceae	2000-2010
<i>Gastrodia procera</i> - Tall Potato-orchid	Orchidaceae	Undated
<i>Gastrodia sesamoides s.l.</i> - Cinnamon Bells	Orchidaceae	2000-2010
<i>Glossodia major</i> - Wax-lip Orchid	Orchidaceae	2000-2010
<i>Leptoceras menziesii</i> - Hare Orchid	Orchidaceae	1980-1989
<i>Lyperanthus suaveolens</i> - Brown-beaks	Orchidaceae	2000-2010
<i>Microtis arenaria</i> - Notched Onion-orchid	Orchidaceae	2000-2010
<i>Microtis oblonga</i> - Sweet Onion-orchid	Orchidaceae	1980-1989
<i>Microtis parviflora</i> - Slender Onion-orchid	Orchidaceae	1980-1989

This display is a preview of the Rich Text document